

RUPA Pass Travel Report March 2019

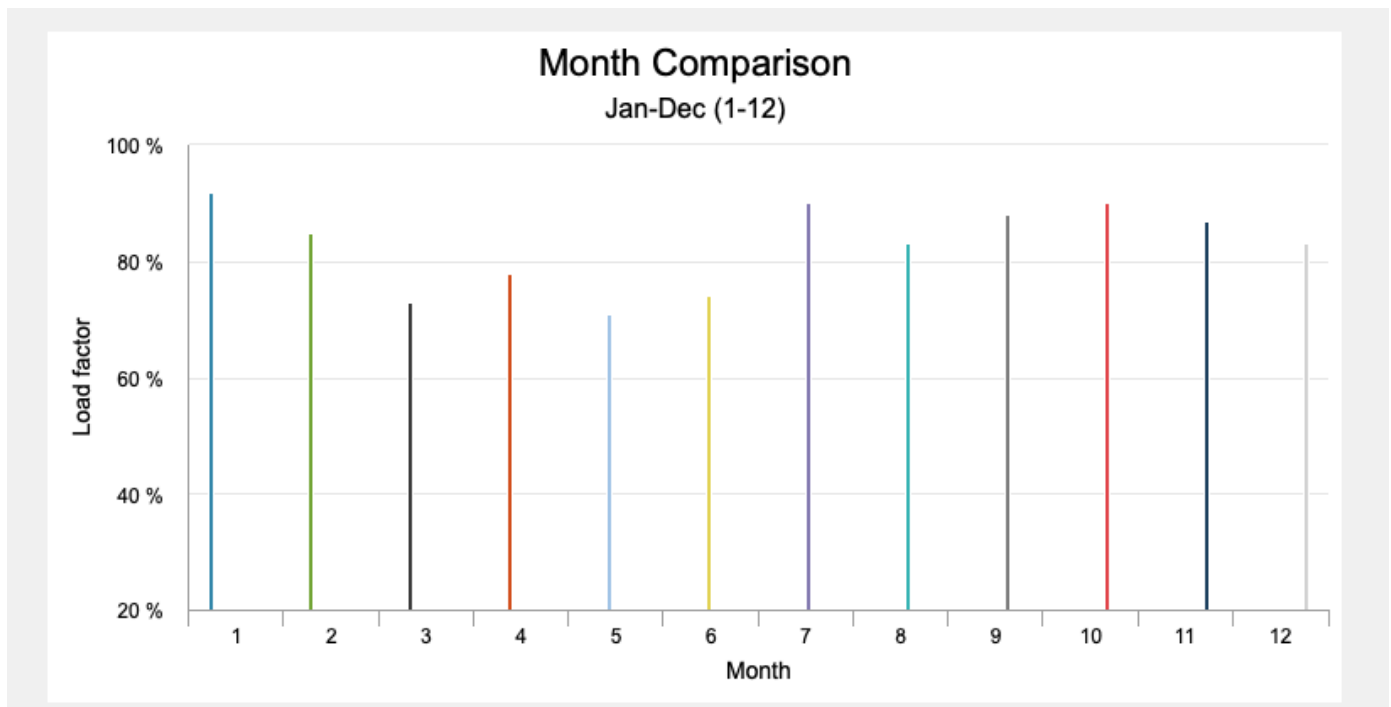
Captain Pat Palazzolo
rupapasstravel@rupa.org

Employee Travel Center (ETC)
+1 (877) 825-3729
etc@united.com

Hello fellow aviators,
Some months ago I recommended a website, IDdeals.com, that gives rather accurate, up to the minute standby availability for most flights throughout the world (I've found Southwest and Air India to be missing). The subscription costs about \$22 per year, and I never leave home without it.

It's great for checking availability within a few days of departure but not much help further out — until now.

IDdeals has added a new feature that allows you to check the historic monthly load factors between most city pairs on each airline and aircraft serving that route. Which month has the most empty seats to say, Melbourne on UA? This is the app for you! This photo shows the load factors for each month.



From the above screen shot it looks like March, May and June have historically had the most available seats from LAX to MEL on UA.

When you select the route to get the monthly history, you have to also enter the airline, and the aircraft. If it won't give you any results it's probably because you didn't enter the correct aircraft or airline.

Sometimes you'll get a graph similar to the one above but some months will be missing. That's because either the aircraft or airline you selected didn't operate during those months.

Be aware that it will check historic load factors only on routes that are within, depart to or arrive from the US.

And finally, to review, here's how the ***Standby Availability*** feature works on ID-deals.com. Enter the date you want to check, and the departure and arrival city and it will display all flights between those two cities with the number of seats still remaining for sale.

In this sample, notice that UA has only three seats left for tomorrow but Qantas

Standby availability from LAX to MEL for 12 Feb 2019

[Prev day](#) | [Next day](#)

| Flt No. | Dep. | Dep. Time | Arr. | Arr. Time | F | J | Y |
|---------|------|-----------|------|-----------|-----|-----|----|
| VA24 | LAX | 20:25 | MEL | 07:10 | n/k | n/k | 18 |
| UA98 | LAX | 22:35 | MEL | 09:25 | n/c | 4 | 3 |
| QF94 | LAX | 22:55 | MEL | 09:50 | n/c | n/c | 9 |
| QF96 | LAX | 23:55 | MEL | 10:30 | n/k | n/k | 20 |

96 has 20 seats remaining.

Disclaimer: I have no financial or other interests in any product that I may recommend in this column. All views in this column are my own and are not endorsed by RUPA or any of its officers.